

Approve purchase of water department supplies

**VILLAGE OF WATERLOO
RESOLUTION NO. 08-13-19-07**

WHEREAS, Melissa Johnson, Village Clerk, has approached the Board of Trustees with a need to purchase a hydrant meter for the Water Department; and

WHEREAS, Johnson confirms that there are funds available in the budget for this meter; and


WHEREAS, the Board of Trustees is in agreement with Johnson that the Water Department has a need for the meter listed in the attached quotes

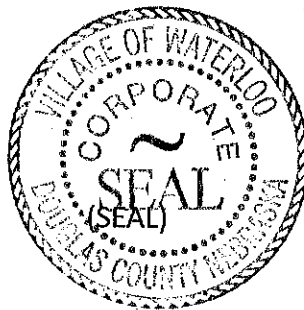
NOW THEREFORE, BE IT RESOLVED BY THE BOARD OF TRUSTEES OF THE VILLAGE OF WATERLOO, NEBRASKA, AS FOLLOWS:

THAT, the attached quote is hereby approved in the amount of \$1,995 for the Water Department.

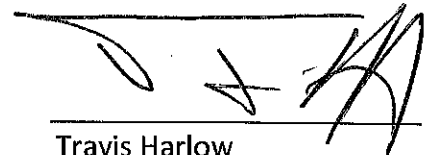
PASSED THIS 13 DAY OF August, 2019.

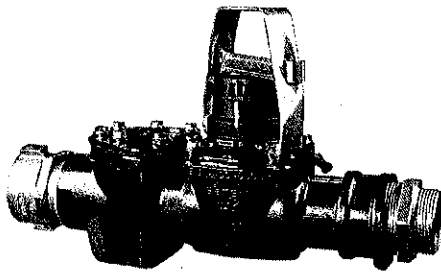
ATTEST:


Melissa Johnson
Village Clerk



Village of Waterloo


Travis Harlow
Chairperson



OMNI™ Fire Hydrant (H²) Water Meter

3" OMNI H² Meter

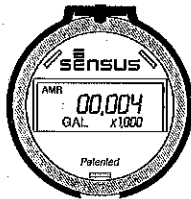
DESCRIPTION:

- Floating Ball Technology (FBT)

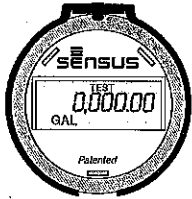
ELECTRONIC REGISTER DISPLAY DIAGRAM



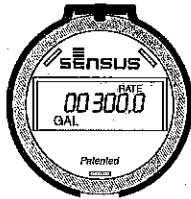
Totalization Mode



AMR/AMI Mode



Resettable Test Mode



Rate of Flow Mode

The OMNI H² meter operation is based on advanced Floating Ball Technology (FBT). The operating range is from 10 to 350 gallons per minute (2.3 to 79.5 m³/h) with registration accuracy of 100% ± 1.5% of actual throughput.

Conformance to Standards

The OMNI H² meter is based on advanced Floating Ball Technology (FBT). Each meter is performance tested to ensure compliance.

Performance

The meter is intended for measuring water from a fire hydrant or other non-permanent installations. The meter comes with fire hose swivel couplings and a register lid locking bar as standard equipment. The patented measurement principles of the OMNI H² meter ensure greater accuracy, expanded accuracy range and longer service life than any other comparable class meter. The OMNI H² meter has no restrictions on sustained flow rates within its continuous range. The floating ball measurement technology allows installation in any orientation and flows up to maximum rated capacity without undue wear or accuracy degradation.

Construction

The OMNI H² meter consists of two basic assemblies: the maincase and the measuring chamber. The measuring chamber assembly includes the "floating ball" impeller with a coated titanium shaft, hybrid axial bearings, integral flow straightener and an all electronic programmable register with lockable bonnet. The maincase is made from cast aluminum with an acrylic polyurethane coating. Maincase features include: easily removable measuring chamber, unique chamber seal to the maincase using a high pressure o-ring, and a convenient integral strainer. A variable orifice is positioned at the rear of the maincase which limits the maximum flow of water through the meter to protect it from overspeeding which could occur when the outflow exits to atmosphere.



OMNI™ H²

OMNI Electronic Register

The OMNI H² electronic register is hermetically sealed with an electronic pickup containing no mechanical gearing. The large character LCD displays AMR, totalization, rate of flow and a resettable test totalizer. OMNI register features include AMR resolution units that are fully programmable, fully programmable pulse output frequency, integral customer data logging capability and integral resettable accuracy testing feature compatible with UniPro and Sensus flow verification software. The large, easy-to-read LCD also displays both forward and reverse flow directions. The OMNI H² electronic register has a 10-year battery life guarantee.

Magnetic Drive

Meter registration is achieved by utilizing a fully magnetic pickup system. This is accomplished by the magnetic actions of the embedded rotor magnets and the ultra sensitive register pickup probe. The only moving component in water is the "floating ball" impeller.

Measuring Element

The hydro-dynamically balanced impeller floats between the bearings. The Floating Ball Technology (FBT) allows the measuring element to operate virtually without friction or wear, thus creating the extended upper and lower flow ranges capable on only the OMNI H² meter.

Strainer

The OMNI H² with "V" shaped strainer using a stainless steel screen along with Floating Ball Technology (FBT) create a design that greatly improves accuracy even in difficult settings. A removable strainer cover permits easy access to the screen for routine maintenance.

Maintenance

The OMNI H² meter is designed for easy maintenance. Should any maintenance be required, the measuring chamber and / or strainer cover can be removed independently. Replacement parts or complete measuring chambers are available for repairs.

AMR/AMI Systems

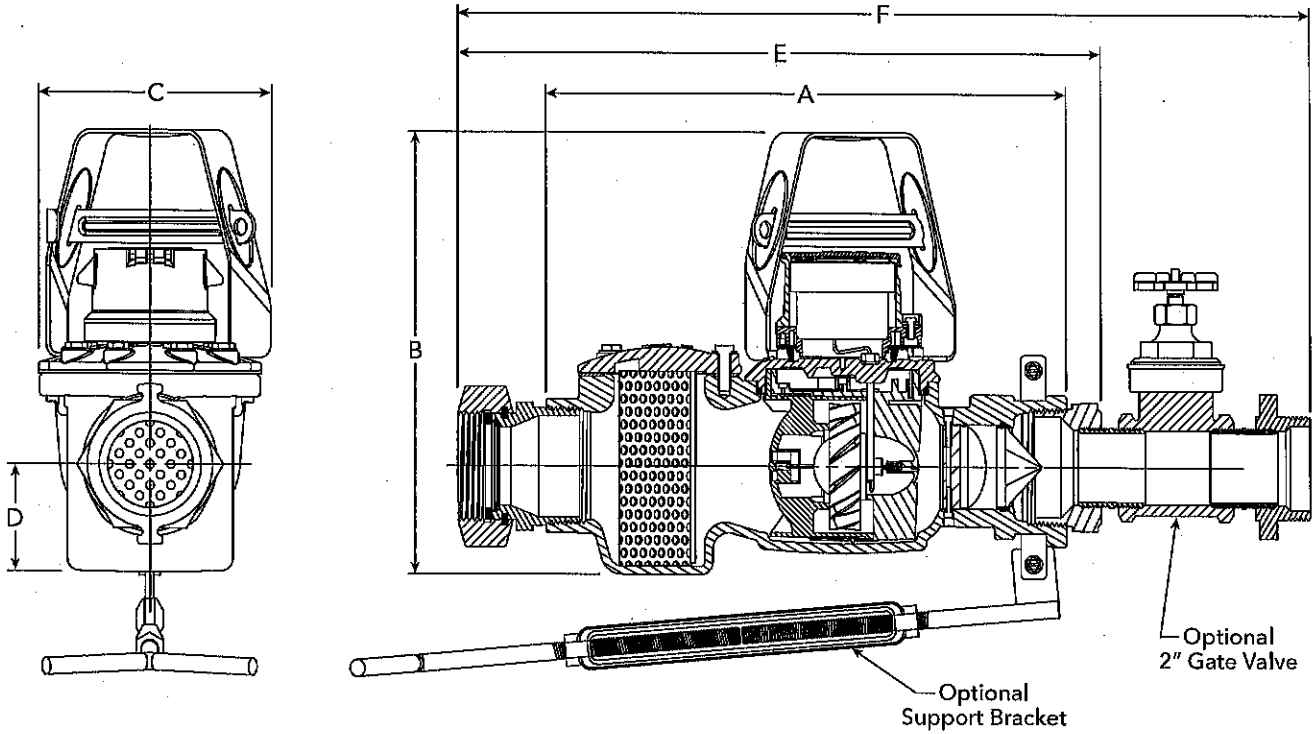
Meters and Electronic Registers are compatible with current Sensus AMR/AMI systems and other AMI communication systems that use the Sensus UI1203 protocol.

Guarantee

Sensus OMNI H² Meters are backed by "The Sensus Guarantee." Ask your Sensus representative for details or see Bulletin G-500.



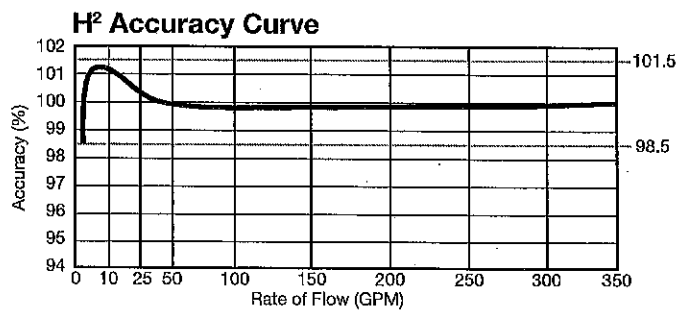
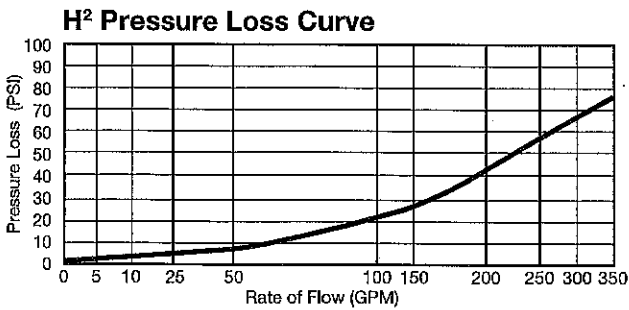
OMNI H² Fire Hydrant Meter



Dimensions and Net Weights

Meter and Pipe Size	A	B	C	D	E	F	Net Weight	Shipping Weight
3" DN 80mm	16" 406mm	13" 330mm	7" 17mm	3.25" 82.6mm	19.5" 495mm	25.6" 650mm	22 lbs. (10 kg.)	26 lbs. (11.8 kg.)

Head Loss Curves





Specifications

Service	Measurement of reclaim water or non-potable water. Storage temperature: -22F (-30C) to 155F (68.3C) Operating temperatures: Air: -22F (-30C) to 150F (65.6C) Water: 33F (0.6C) to 80F (26.7C)
Operating Range (100% ± 1.5%)	10 - 350 GPM (2.3 - 79.5 m ³ /hr)
Maximum Intermittent Operation	600 GPM (136.3 m ³ /hr)
Pressure Loss	75 psi @ 350 GPM
Maximum Operating Pressure	150 PSI (10.3 bar)
Connections	Couplings
Hose Couplings	2-1/2" - 7-1/2" NST Threads (78P - 3.4mm) (National Standard Fire Hose Coupling thread) furnished unless otherwise specified. Complete thread specifications must be furnished for special fire hose fittings
Register	Fully electronic sealed register with programmable registration (Gal. /Cu.Ft./ Cu. Mtr. / Imp. Gal. / Acre Ft.) Programmable AMR/AMI reading Guaranteed 10-year battery life
Materials	Maincase: Cast Aluminum Measuring Chamber: Thermoplastic Rotor "Floating Ball": Thermoplastic Radial Bearings: Hybrid Thermoplastic Thrust Bearings: Sapphire/Ceramic Jewel Magnets: Ceramic Strainer Screen: Stainless Steel Strainer Cover: Cast Aluminum
Options	Available with: • 2" Gate valve on outlet end • Techno-check reverse flow check valve • Adjustable support rod assembly
Flow Restrictions	Limits flow through meter to 600 gpm at 150 psi. (136.3 m ³ /h at 10.3 bar)

Techno-Check Valve

The Techno-Check Valve is a reverse flow check valve for the OMNI H² fire hydrant meter. This is an optional feature that should be identified as a requirement at the time the order is placed. Techno-check Valves must be installed at the factory.



8601 Six Forks Rd, Ste 700
Raleigh, NC 27615
1-800-638-3748
sensus.com

©2017 Sensus. All products purchased and services performed are subject to Sensus' terms of sale, available at either sensus.com/TC or 1-800-638-3748. Sensus reserves the right to modify these terms and conditions in its own discretion without notice to the customer. The Sensus logo is a registered trademark of Sensus.

THIS DOCUMENT IS FOR INFORMATIONAL PURPOSES ONLY, AND SENSUS MAKES NO EXPRESS WARRANTIES IN THIS DOCUMENT. FURTHERMORE, THERE ARE NO IMPLIED WARRANTIES, INCLUDING WITHOUT LIMITATION, WARRANTIES AS TO FITNESS FOR A PARTICULAR PURPOSE AND MERCHANTABILITY. ANY USE OF THE PRODUCTS THAT IS NOT SPECIFICALLY PERMITTED HEREIN IS PROHIBITED.

mpruitt@waterloone.com

From: mpruitt@waterloone.com
Sent: Tuesday, August 13, 2019 1:16 PM
To: 'Melissa Johnson'
Subject: FW: 3" Omni H2 Meter
Attachments: OMNI H2 Data Sheet.pdf

Meagan Pruitt

-----Original Message-----

From: Nathan Taylor <NTaylor@peopleservice.com>
Sent: Thursday, July 25, 2019 1:43 PM
To: 'mpruitt@waterloone.com' <mpruitt@waterloone.com>
Subject: FW: 3" Omni H2 Meter

Meg,

Here is the quote for a hydrant meter. Let me know what you would like to do.

Thanks,

Nate Taylor
Lead Operator
PeopleService Inc.
Water and Wastewater Professionals
Valley, NE
Cell- 402-677-0575

From: Fisher, Graham <Graham.Fisher@coreandmain.com>
Sent: Wednesday, July 24, 2019 8:56 AM
To: Nathan Taylor <NTaylor@peopleservice.com>
Subject: 3" Omni H2 Meter

Nate,
3" Omni H2 hydrant meter: \$1,995.00
with built in strainer and techno check valve.
1000 gallon TR/PL register.
Hydrant support and NST couplings.
Thanks,
Graham

Graham Fisher
Sales Representative
Core & Main

10707 S. 149th Street
Omaha, NE 68138
P.402-896-6173
M.402-432-5944
Graham.fisher@coreandmain.com<mailto:Graham.fisher@coreandmain.com>

[<https://www.share.hdsupply.net/intranet/Library/Digital%20Resource%20Kit/Logos/Core%20and%20Main%20Master.jpg>]

http://www.coreandmain.com/<https://linkprotect.cudasvc.com/url?a=http%3a%2f%2fwww.coreandmain.com%2f&c=E,1,Zeeynbu83IHT8sddohVsOeVYF7WtpTAijXAapFzd8Euu0EIqaAPR_mmvAUeqxyYiH_Zk1Q7TZaBr9BDG6JkkcC_NjUnaFf4G28jPcE5t&typo=1>

This message is for intended addressee(s) only and may contain confidential, proprietary or privileged information, exempt from disclosure, and subject to terms at:

<http://www.coreandmain.com/email/<https://linkprotect.cudasvc.com/url?a=http%3a%2f%2fwww.coreandmain.com%2femail%2f&c=E,1,BPRfKobqITA1TgPBLfTXH0g4vBrH0Z3IBvQQt0kNRNOhZYB664dgNUA-EFii5m0UcN5vdD9-sarqR5jXYi2sb1u-bfvzqSASglnCTOtCtos,&typo=1>>.

NOTICE: This e-mail message (including any file attachment) is intended only for the use of the individual or entity to which it is addressed, and may contain information that is privileged and/or confidential. If you are not the intended recipient, any dissemination, distribution or copying of this communication is strictly prohibited. If you received this communication in error, please notify us immediately by reply e-mail and delete or destroy all copies of this message and any file attachment. Thank you!